





## 总公司概况

## About the company

### ■ **Company Feature**

Shanghai Weiya industry co., Ltd is in the fields of manufacturing; capital investing; research & development; logistics, quality test & inspection and international trading.

### ■ **Main products**

Bearings & bearing parts  
Transmission parts  
Auto parts  
Light industry products  
Supplier Audit and Assessment

### ■ **Company development**

We have reached the export volume of USD 15 million every year, and growing by 20% in average.

### ■ **Company Philosophy**

Everything we do is to meet our customer's need.



Sample Room



Office



Entrance

■ COMPANY TREE



Wuxi Tianli Bearing Co., Ltd.  
— Products Research,  
Development and Manufacture



Shanghai Weiya Industry Co., Ltd.  
Inspection Center



Shanghai Weiya Industry Co., Ltd.  
Warehouse

A & L Bearings and Components, Inc. — Overseas Sales and Logistics





- **M**any years experienced engineers and managers make us be qualified to supply our customer with high level quality products and to solve their technical problems. Professional engineers for Quality Control are working for the best products and service.



Professional engineers at work



Workshop



Training





Roundness measuring tester



Surface roughness measuring instrument



Vibration tester



Hardness tester



Radial Clearance tester



Product inspection





**Deep Groove Ball Bearing**

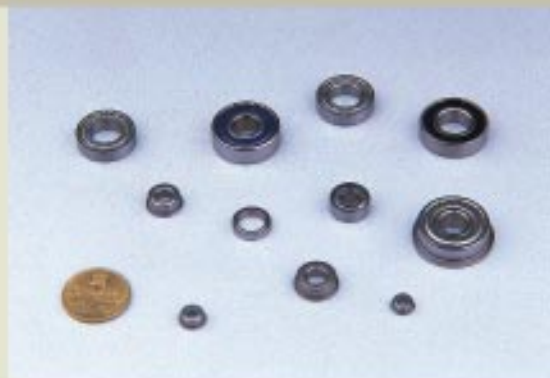
6000-6044 Z; ZZ; RS; 2RS; N; NR  
6200-6244 Z; ZZ; RS; 2RS; N; NR  
6300-6344 Z; ZZ; RS; 2RS; N; NR  
6403-6444 Z; ZZ; RS; 2RS; N; NR  
6800-6844 Z; ZZ; RS; 2RS;  
6900-6944 Z; ZZ; RS; 2RS;  
6701-6744 Z; ZZ; RS; 2RS;  
R2-R24 Z; ZZ; RS; 2RS;  
16001-16044 1601-1656  
RLS4-RLS26 RMS4-RMS26  
EMQ bearings, FULL Ball Bearing  
high speed

**Miniature Bearings**

Miniature Bearing with Flange

Bore dia 1mm-9mm

Chrome Alloy Steel or Stainless Steel, Stainless or Ceramic



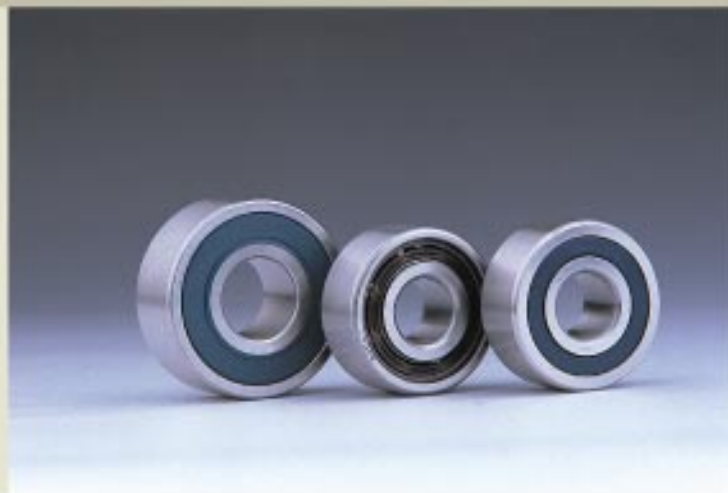
**Single Row Angular Contact Ball Bearings**

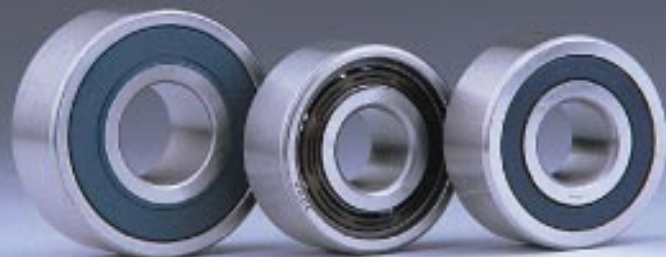
7004C-7022C 7004B-7022B  
7200C-7222C 7200B-7222B 7200AC-7222AC  
7303C-7322C 7301B-7322B 7303AC-7322AC

**Double Row Angular Contact Ball Bearings**

5200-5216 ZZ 2RS (3200-3216)

5300-5315 ZZ 2RS (3302-3315)





**Double Row Ball Bearings**

4200-4215 ZZ 2RS

**Thrust Ball Bearings**

51100-51158 51200-51258 51300-51358

51405-51458 52202-52258

**Miniature Thrust Ball Bearings, Bore Dia: 1mm-9mm**



Website: [www.sh-weiya.com](http://www.sh-weiya.com)

**SZD**®

**Self-aligning Ball Bearings**

1200-1222 1203K-1222K

1300-1322 1303K-1322K

2202-2222 2204K-2222K

2304-2322 2304K-2322K





**Cylindrical Roller Bearings**

|               |               |               |
|---------------|---------------|---------------|
| N202-N232     | N304-N332     | N404-N432     |
| NU202-NU232   | NU304-NU332   | NU404-NU432   |
| NJ202-NJ232   | NJ304-NJ332   | NJ404-NJ432   |
| NUP204-NUP232 | NUP304-NUP332 | NUP404-NUP432 |

**Needle Roller Bearings**

Needle Roller and Cage Assesmbles:

K, KK  $F_w=3-265$

Drawn Cup Needle Roller Bearing:

HK, BK (RS, 2RS)  $F_w=3-60$

Needle Bearing with Ferrule:

NA, NKS,

RNA48, RNA49, RNA69 (2RS)

NKI, NKIS

NA48, NA49, NA69 (RS, 2RS)

RNAO, NAO  $d(F_w)=5-310$



Inner Ring: IR, LR  $d=5-380$

Drawn Cup Roller Clutches: HF, HFL  $F_w=3-35$

Axial Needle Roller Bearing: AXK, AXW, AS  $d=4-160$

Track Roller: NATR, NATV (PP)  $d=5-50$

RSTO, STO  $d=5-50$

RNA22, NA22 (2RS)  $d=5-50$

KR, KRV, KRE (PP)  $d=5-50$



**Tapered Roller Bearings**

|             |               |             |
|-------------|---------------|-------------|
| 30202-30228 | 30302-30321   | 32205-32230 |
| 32303-32322 | 32006X-32032X | 33010-33021 |
| 33205-33220 | 33109-33120   |             |

**Inch-size Tapered Roller Bearings:**

LM... HM... JLM...



## Self-aligning Roller Bearings

21305-21396 22205-22296 22308-22396  
23012-23096 23120-23196 23219-23296  
23932-23996 24020-24096 24120-24196



## Thrust Self-aligning Roller Bearings

29412-29496 29317-29396  
29240-29296

Website: [www.sh-weiya.com](http://www.sh-weiya.com)



## Thrust Cylindrical Roller Bearings

K81102-K81164 K81206-K81260  
K89306-K89330 K89412-K89464  
GS811, GS812, GS893, GS894  
WS811, WS812, WS893, WS894, LS

d=15-320

WEEYA®



**Water Pump Bearings**

WB (Ball-Ball)  
WR (Ball-Roller)

**Wheel Bearings**

DAC, DACF d=25-50



**Tension Pulleys**

**Clutch Bearings**





**Steering Bearings**

**Universal Joints**



**C.V. Joints**

Website: [www.sh-weiya.com](http://www.sh-weiya.com)

**Double-row tapered roller bearings**





**Spherical Plain Radial Bearings**

GE.....(2RS)                      d=4-160

**Rod Ends**

PHS.....POS.....(PTFE)                      d=3-50

GK.....GF.....GIHN.....CIHD..... d=12-120

GAC...GX.....(PTFE)                      d=10-200

CM...CF...SA...SI...                      d=3-12



**Insert Ball Bearings Units**

UC201-UC218 UC305-UC320 HC201-HC215

UK205-UK218 UK305-UK328 UCX201-UCX218

SB201-SB212 SA201-SA212 SC203-SC212

Housings: (Cast) P, F, FL, T, FC, PA, AK, FS, C,  
(Punch) PP, PF, PFT, PFL

**Linear Bearings**

KH.....LM.....                      d=8-50



**Agricultural Bearings**



**Bushings**     d=6-300

Website: [www.sh-weiya.com](http://www.sh-weiya.com)

**Non-standard Bearings**



**Plastic Bearings**



**SZD**®



**Gears**

Spur Gears / Bevel Gears / Helix Gears

Sprockets



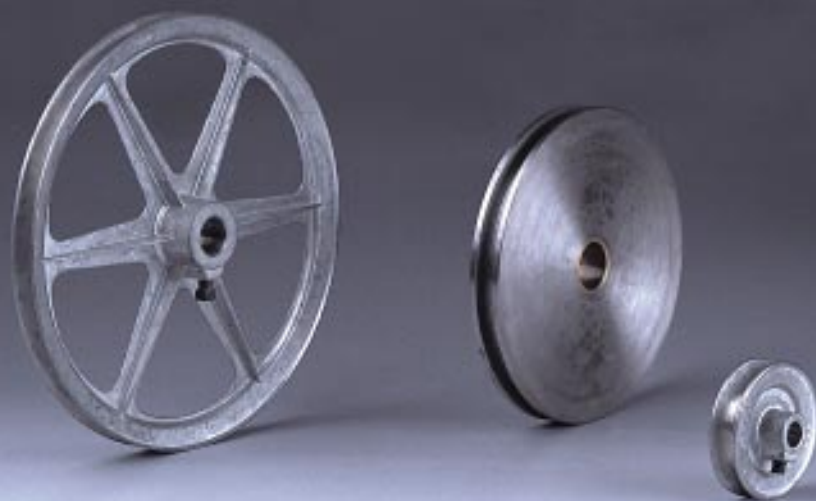
Website: [www.sh-weiya.com](http://www.sh-weiya.com)

**Chains**

Roller chains / Leaf chains / Conveyor chains







Belt Pulleys / Wire Rope Pulleys



Synchronous Pulleys

**Transmission Belts**

Synchronous Belts / Various-speed Belts  
Wedged Belts / V-belts



**QD Bushes**  
**Taper Bushes**  
**Locks**  
**Couplings**

WEEYA®

**Brake Discs**



**wheels**

**Brake Blocks**



**Mechanical Seals**



**Cylinder Head Gaskets**



**Seals**







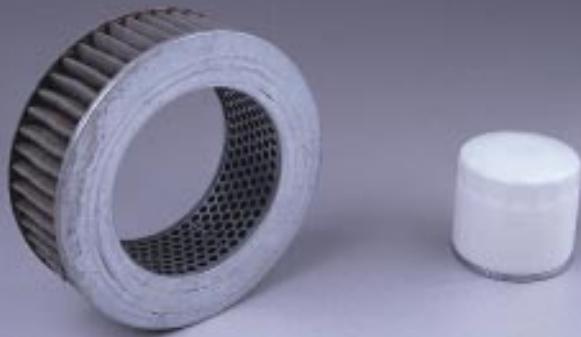
**Support Rack**

**Steering Wheels**



Website: [www.sh-weiya.com](http://www.sh-weiya.com)

**Filters**



**Seats**



**Rubber Products**



**Lamps and Lanterns**



**Shock Absorbers**





**Mechanical Products**

- Screws
- Fittings
- Ball Joints
- Shafts / Disks



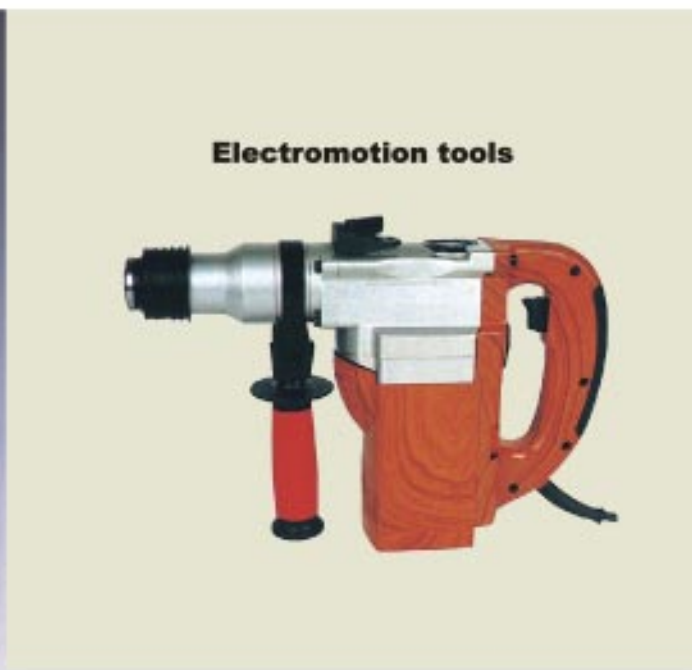
**Measuring tools  
& Cutting tools**



**Stamping Parts**



**Casting Parts**



**Electromotion tools**



**Powder Metallurgical Parts**



**Forging Parts**



**Rubber and Plastic Parts**

Website: [www.sh-weiya.com](http://www.sh-weiya.com)

**Hardwares**



**Tools**



**Steel Balls**

d=  $\phi$  1-  $\phi$  200 mm



**Needle Rollers**

$D_w = \phi$  1-  $\phi$  6

**Cylindrical Rollers**

$D_w = \phi$  3-  $\phi$  80

**Accessory of Bearings**

Adapter Sleeve H d=20-500mm  
Quit Sleeve AH d=40-500mm  
Lock Nut AN d=18-630mm  
Lock Washer AW d=15-200mm  
Seals / shields



**Valve Balls**

DR...

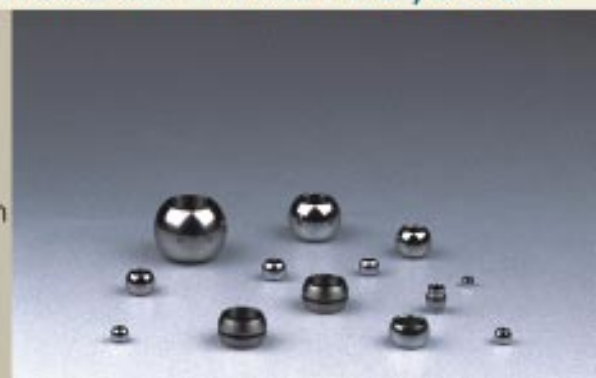
d=6-50mm

Website: [www.sh-weiya.com](http://www.sh-weiya.com)

**Rod End Balls**

GR...

d=3-50mm





Let the customers aboard purchase securely in China  
We offer you "QUALITY INSPECTION SERVICE"  
And help you to select the qualified supplier.

Our company provides services & perform as per ISO9000 & Qs9000.

## SERVICE ITEMS

**We can provide to the overseas purchasing customer  
the following services:**

- the assessment of quality system of the supplier
- the assessment of manufacture processes and capability
- the assessment of products' inspection and test capability
- the samples and products inspection and test report before delivery





To make the trouble free, to decline the cost,  
and to create the value

## Procedure of the "quality control inspection service"

### 1.Mission Confirmation

Let customers fill in the application table

To affirm the price

Let customers accredit us

### 2.Assessment preparation

To know the scale and the manufacture feature of the factory

To prepare the standard regulation document

To draw out the plan

To inform the factory to be prepared

### 3.Assessment Implementation

To collect the information of the factory

To assess the application and efficiency of the document

To compare and find out the difference

### 4.Assessment Improvement

Let the factory affirm the difference

To affirm the improvement plan

### 5.Assessment Report

To report to the customers

To deal with the problems left behind





## Registration Certificate



Certificate Number 4028

|                              |                    |                |
|------------------------------|--------------------|----------------|
| 7 April 2006                 | 7 April 2006       | 6 April 2009   |
| Date of Initial Registration | Date of Last Issue | Date of Expiry |

*This is to certify that the Quality System of*

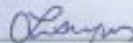
**Shanghai Weiya Industry Co., Ltd.**  
12F Yinqiao Building, No. 58, Jinxin Road  
Jinqiao Area, Pudong  
Shanghai  
China

*meets the requirements of ISO 9001: 2000*

*and is registered within the  
BM TRADA Certification scheme for approved Quality Systems*

*The Scope of the approval is as shown in the Schedule*

*The Company agrees to maintain its Quality System to ISO 9001: 2000  
and use the Approved Quality System Mark in accordance with the Regulations*



Signed on behalf of BM TRADA Certification Ltd



For verification of this certificate please visit [www.bmtrada.com](http://www.bmtrada.com)  
© 2001 to 2009 September 2009. This certificate remains the property of  
BM TRADA Certification Ltd. In which it must be retained as required.

The use of the certification mark indicates certification in respect  
of those activities covered by the accreditation certificate 012.



## 上海崑崙實業有限公司

SHANGHAI WEIYA INDUSTRY CO.,LTD.

- 
- 地址：中国·上海市浦东金桥金新路58号银桥大厦12楼
  - 12F Yinqiao Building , 58 Jinxin Road Jinqiao Area , Pudong , Shanghai , China
  - 电话：86-21-58540259    TEL: 86-21-58540259
  - 传真：86-21-58543993    FAX: 86-21-58543993
  - 邮编：201206                P.c: 201206
  - Website: [www.sh-weiya.com](http://www.sh-weiya.com)
  - E-mail: [weeya@sh-weiya.com](mailto:weeya@sh-weiya.com)
-